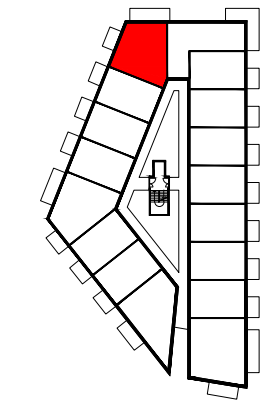


WOHNHAUSLAGE - Gaswerkstraße 5, 1210 Wien



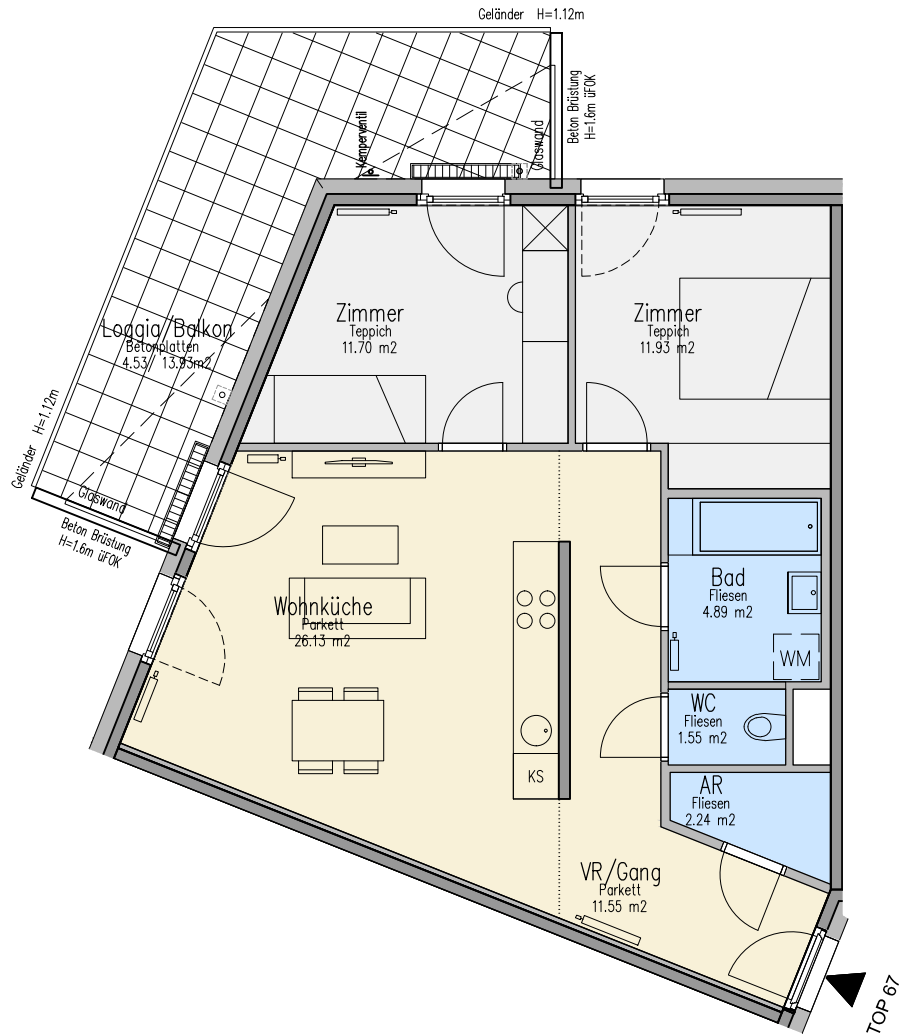
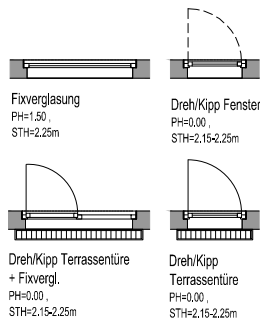
4.OBERGESCHOSS TOP 67

Visualisierung - Ostfassade



LEGENDE:

- Parkett
- Fliesen
- Teppich



TOP_67 - Typ C	
WNFL	69.99 m ²
Loggia	4.53 m ²
Gesamt	74.52 m²
Balkon	13.93 m ²
Kellerabteil	2.24 m ²



M 1:100