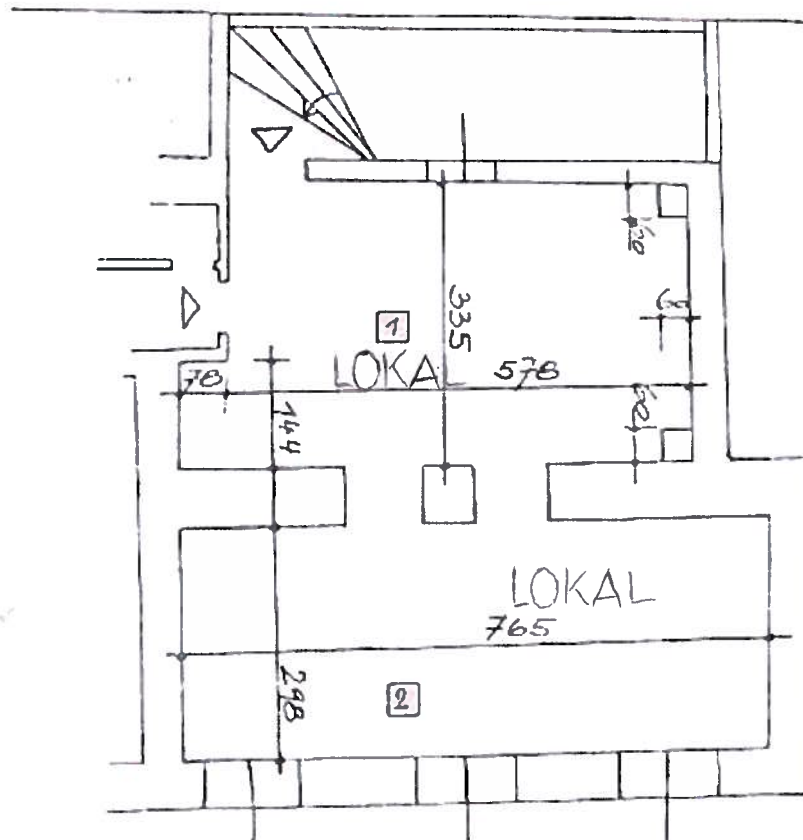


1. OG
3 PAGEN



$$\begin{array}{r}
 1: \quad 3,35 \times 5,78 = 19,36 \\
 \quad 0,78 \times 1,44 = 1,12 \\
 \quad -0,60 \times 0,60 \text{ (x2)} = -0,72 \\
 \hline
 \quad \quad \quad 19,76 \text{ m}^2
 \end{array}$$

$$2: 7,65 \times 2,98 = 22,80 \text{ m}^2$$

1. OG
3 PAGEN : 42,56 m²